



DIN Rail Mounted Terminals
(TS35, TS32, TS15)

DIN Rail Mounted
Distribution Blocks
(TS35, TS32)

DIN Rail Mounted
Lighting Pole Terminals
(TS35, TS32)

PCB Mounted Terminals

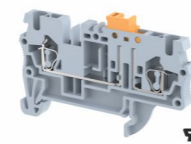


Elmex Controls Pvt. Ltd. | Elmex Electric Pvt. Ltd.
12, GIDC Estate, Makarpura, Vadodara - 390010, Gujarat, India

☎ 0265-2642021 / 23 ✉ marketing@elmex.net
🌐 www.elmex.net



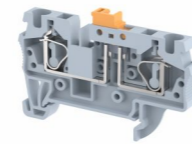
Disconnect Terminals



SQK2.5

IEC60947-7-1
1000V / 20A / 2.5 sqmm

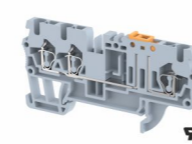
CSA/UL Rating
600 V / 16A /
12 to 24 AWG



SQK4

IEC60947-7-1
1000V / 22A / 4 sqmm /

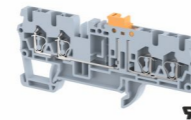
CSA/UL Rating
600 V / 16A /
10 to 24 AWG



SQK2.5(1X2)

IEC60947-7-1
1000V / 20A / 2.5 sqmm

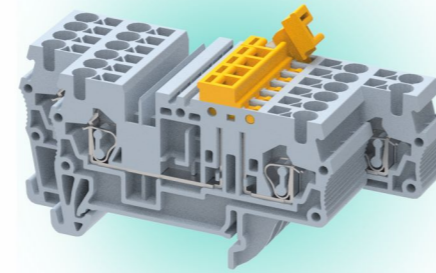
CSA/UL Rating
600 V / 16A /
12 to 24 AWG



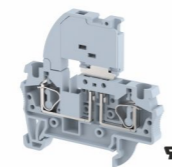
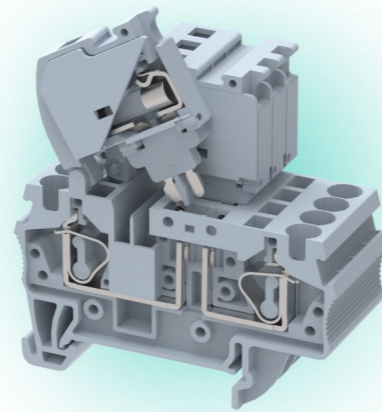
SQK2.5(2X2)

IEC60947-7-1
1000V / 20A / 2.5 sqmm

CSA/UL Rating
1000 V / 16A /
12 to 24 AWG



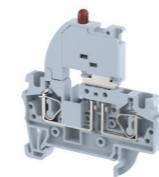
Fuse Terminals



SQF4

IEC60947-7-1
1000V / 32A / 4 sqmm /

CSA/UL Rating
600 V / 30A /
10 to 24 AWG



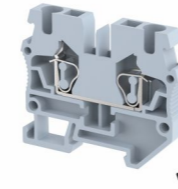
SQF4-LED

IEC60947-7-1
4 sqmm (Variable Rating)

CSA/UL Rating
10 to 24 AWG
(Variable Rating)

Suitable for: 24V, 48V, 110V,
220V, 12V AC & DC Voltage

Micro Terminals



SQM2.5

IEC60947-7-1
1000V / 20A / 2.5 sqmm

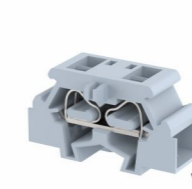
CSA/UL Rating
600V / 16A
12 to 24 AWG



SQP2.5

IEC60947-7-1
800V / 20A / 2.5 sqmm

CSA/UL Rating
300V / 16A
12 to 24 AWG



SQP2.5P4

IEC60947-7-1
800V / 20A / 2.5 sqmm

CSA/UL Rating
300V / 16A
12 to 24 AWG

Contact Information

Bhairav Joshi
Manager - Exports

✉ bhairavjoshi@elmex.net
☎ +91 97370 77738

Daxay Soni
Territory Manager

✉ dsoni@elmex.net
☎ +91 97376 77738

Hitesh Patel
Asst. Manager - EXIM

✉ hitesh@elmex.net
☎ +91 94283 00369

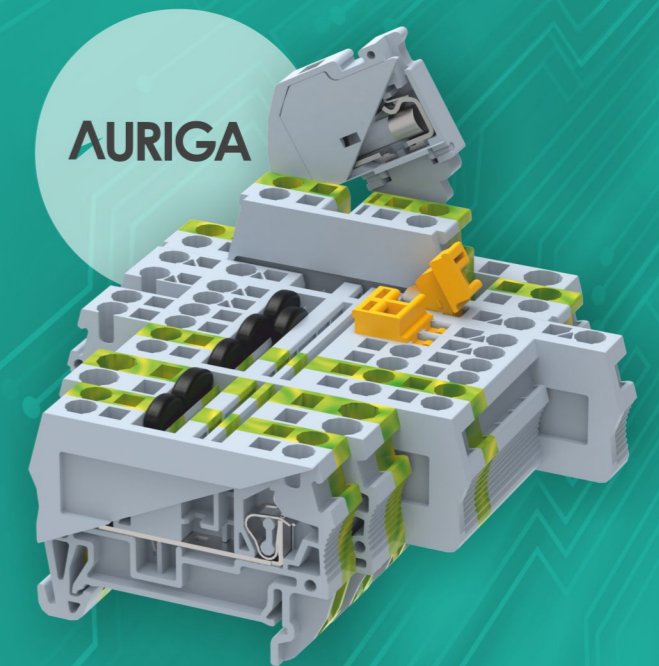
Rahul Thakkar
Asst. Manager- Exports

✉ ibsales@elmex.net
☎ +91 99798 46927



since 1963

SPRING CLAMP TECHNOLOGY

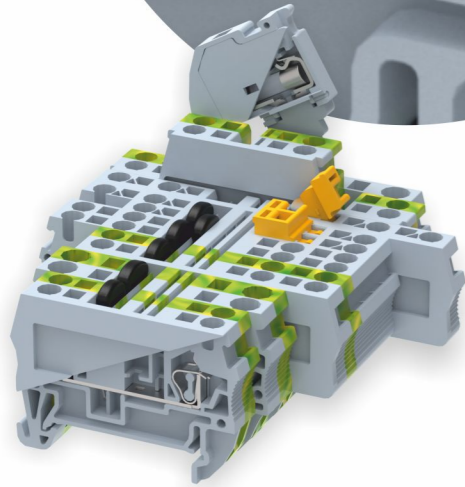
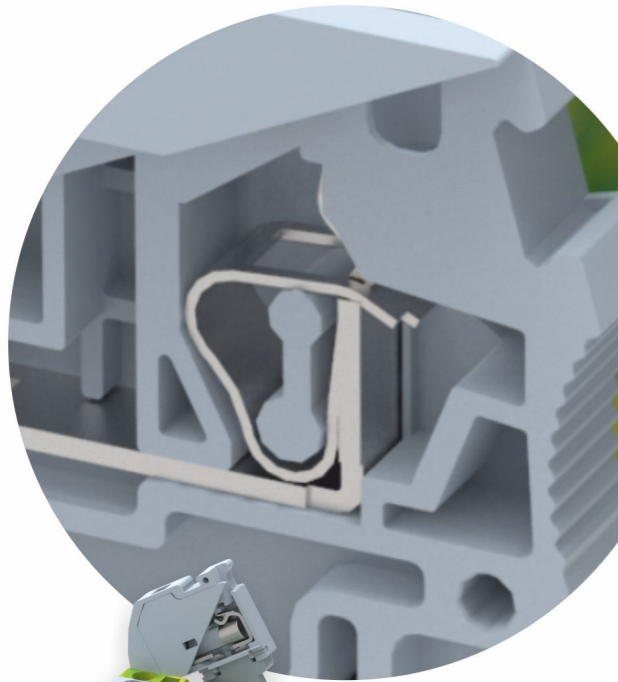


🌐 www.elmex.net

AURIGA

SPRING CLAMP TECHNOLOGY

Auriga is a beautiful pentagon-shaped constellation on the celestial equator. It is derived from Latin, and means "The Charioteer" in Greek mythology. This highlights the "Spring Clamp" AURIGA range as the work-horse of the elmex range that will drive growth and power a brighter tomorrow.



Spring Clamp technology

Enhanced clamping force for conductor retention

Better wiring efficiency and productivity

Rated for 1000V

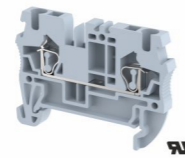
Twin shorting facility

Top marking label provision

Suitable for prepared as well as unprepared conductors

Vibration resistant connection

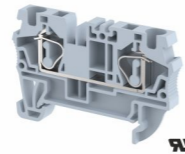
Feed Through Terminals



SQ2.5

IEC60947-7-1
1000V / 24A / 2.5 sqmm

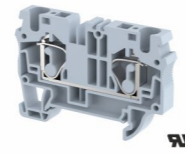
CSA/UL Rating
600 V / 20A /
12 to 24 AWG



SQ4

IEC60947-7-1
1000V / 32A / 4 sqmm

CSA/UL Rating
600 V / 30A /
10 to 24 AWG



SQ6

IEC60947-7-1
1000V / 41A / 4 sqmm

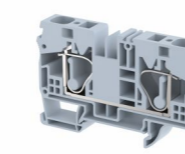
CSA/UL Rating
600 V / 50A /
8 to 20 AWG



SQ10

IEC60947-7-1
1000V / 57A / 10 sqmm

CSA/UL Rating
600 V / 65A /
6 to 20 AWG

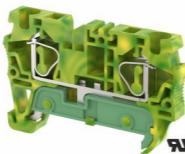


SQ16

IEC60947-7-1
1000V / 76A / 16 sqmm

CSA/UL Rating
600 V / 85A /
4 to 20 AWG

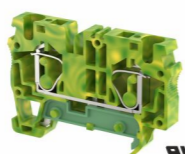
Earth Terminals



SGQ2.5

IEC60947-7-2
2.5 sqmm

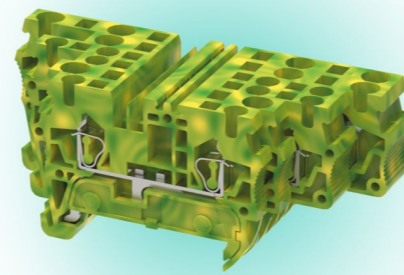
CSA/UL Rating
12 to 24 AWG



SGQ4

IEC60947-7-2
4 sqmm

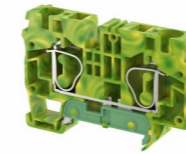
CSA/UL Rating
10 to 24 AWG



SGQ6

IEC60947-7-2
6 sqmm

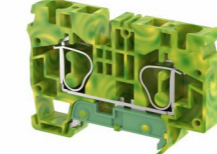
CSA/UL Rating
8 to 20 AWG



SGQ10

IEC60947-7-2
10 sqmm

CSA/UL Rating
6 to 20 AWG

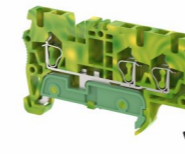


SGQ16

IEC60947-7-2
16 sqmm

CSA/UL Rating
4 to 20 AWG

Earth Multi Conductor Terminals



SGQ2.5(1X2)

IEC60947-7-2
2.5 sqmm

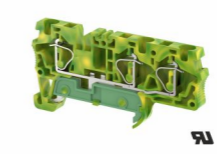
CSA/UL Rating
12 to 24 AWG



SGQ2.5(2X2)

IEC60947-7-2
2.5 sqmm

CSA/UL Rating
12 to 24 AWG



SGQ4(1X2)

IEC60947-7-2
4 sqmm

CSA/UL Rating
10 to 24 AWG



SGQ4(2X2)

IEC60947-7-2
4 sqmm

CSA/UL Rating
10 to 24 AWG



SGQ6(1X2)

IEC60947-7-2
6 sqmm

CSA/UL Rating
8 to 20 AWG



SGQ10(1X2)

IEC60947-7-2
10 sqmm

CSA/UL Rating
6 to 20 AWG

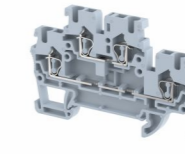
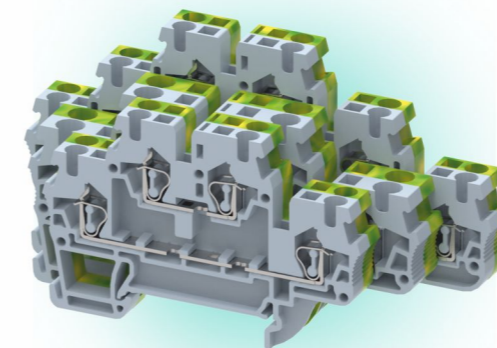


SGQ16(1X2)

IEC60947-7-2
16 sqmm

CSA/UL Rating
4 to 20 AWG

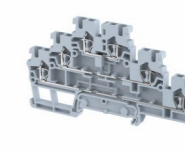
Multi Level Terminals



SQ2.5-2T

IEC60947-7-1
1000V / 24A / 2.5 sqmm

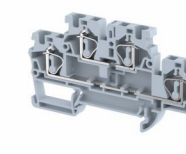
CSA/UL Rating
600 V / 20A /
12 to 24 AWG



SQ2.5-3T

IEC60947-7-1
500V / 24A / 2.5 sqmm

CSA/UL Rating
300 V / 20A /
12 to 24 AWG



SQ4-2T

IEC60947-7-1
1000V / 32A / 4 sqmm

CSA/UL Rating
600 V / 30A /
10 to 24 AWG

Earth Multi Level Terminals



SGQ2.5-2T

IEC60947-7-2
2.5 sqmm

CSA/UL Rating
12 to 24 AWG



SGQ2.5-3T

IEC60947-7-2
2.5 sqmm

CSA/UL Rating
12 to 24 AWG

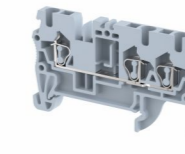


SGQ4-2T

IEC60947-7-2
4 sqmm

CSA/UL Rating
10 to 24 AWG

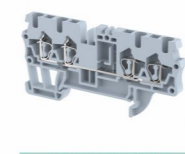
Multi Conductor Terminals



SQ2.5(1X2)

IEC60947-7-1
1000V / 24A / 2.5 sqmm

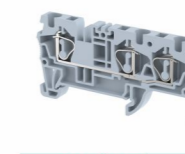
CSA/UL Rating
600V / 20A
12 to 24 AWG



SQ2.5(2X2)

IEC60947-7-1
1000V / 24A / 2.5 sqmm

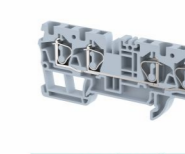
CSA/UL Rating
600V / 20A
10 to 24 AWG



SQ4(1X2)

IEC60947-7-1
1000V / 32A / 4 sqmm

CSA/UL Rating
600V / 30A
10 to 24 AWG



SQ4(2X2)

IEC60947-7-1
1000V / 32A / 4 sqmm

CSA/UL Rating
600V / 30A
10 to 24 AWG