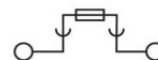
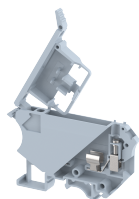


## UBDF4

Terminal Type - UBDF4, Fuse terminal block, nominal voltage: 1000 V, nominal current: 6.3 A, Rated cross-section – 4 mm<sup>2</sup>, suitable size of cartridge fuse: 5X20 mm and 5X25 mm, connection method: Screw connection, number of connections: 2, cross section: 0.5 mm<sup>2</sup> - 6 mm<sup>2</sup>, AWG: 24 -10, mounting type: TS 35/7.5, TS 35/15, TS 32



### Approvals



### General Information

Product Name	UBDF4
Connection Method	Screw Connection
Rating	1000 V/6.3 A/4 mm <sup>2</sup> /0.5 Nm
HSN Number	85389000
Standard Packing Qty(in No)	100
Country Of Origin	India
Screw thread	M3

### Dimensions & Weight

Width	8.25 mm	0.32 inch
Length	72.5 mm	2.85 inch
Height	56.5 mm	2.22 inch
Weight of std. Packing Unit	1.9 Kg	

### Material Data

Insulating Material	Polyamide 6,6
Standard Colour	Gray
Colour Variants	Red , Yellow , Blue , Black , Green , Khakhi ,

### Rated Conductor Size

Conductor cross section flexible min	0.5 mm <sup>2</sup>
Conductor cross section flexible max	4 mm <sup>2</sup>
Conductor cross section solid min	0.5 mm <sup>2</sup>
Conductor cross section solid max	6 mm <sup>2</sup>

### Ratings - IEC

Connection in acc. with standard	IEC-60947-7-3
Nominal Voltage $U_n$	1000 V
Nominal Current $I_n$	6.3 A
Nominal cross section	4 mm <sup>2</sup>
Short-time current	NAP kA
Rated surge voltage	8 kV
Degree of pollution	3

### Ratings - ATEX

ATEX Standard	
ATEX Nominal Voltage $U_n$	750 V
ATEX Nominal Current $I_n$	4 A
ATEX Cross Sec. Flexible Max.	4 mm <sup>2</sup>

### Ratings - CSA

CSA Standard	CSA C22.2 NO 158
B - CSA Nominal Voltage $U_N$	600 V
B - CSA Nominal Current $I_N$	10 A
B - CSA Wire Min	24 AWG
B - CSA Wire Max	10 AWG

### Ratings - UL

UL Standard	UL 1059
B - UL Nominal Voltage $U_N$	600 V
B - UL Nominal Current $I_N$	10 A
B - UL Wire Min	24 AWG
B - UL Wire Max	10 AWG