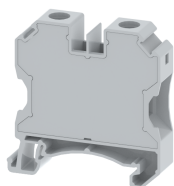


## TQC16

Terminal Type - TQC16, Feed-through terminal block, nominal voltage: 1000 V, nominal current: 76 A, connection method: Screw connection, number of connections: 2, cross section: 0.2 mm<sup>2</sup> - 25 mm<sup>2</sup>, AWG: 24-4 , mounting type: TS 35/7.5, TS 35/15



### Approvals



### General Information

Product Name	TQC16
Connection Method	Screw Connection
Rating	1000 V/76 A/16 mm <sup>2</sup> /2 Nm
HSN Number	85389000
Standard Packing Qty(in No)	50
Country Of Origin	India
Screw thread	M5

### Dimensions & Weight

Width	12 mm	0.47 inch
Length	53.6 mm	2.11 inch
Height	54.2 mm	2.13 inch
Weight of std. Packing Unit	1.6 Kg	

### Material Data

Insulating Material	Polyamide 6,6
Standard Colour	Gray
Colour Variants	Red , Yellow , Blue , Black , Green , Khakhi ,

### Rated Conductor Size

Conductor cross section flexible min	0.2 mm <sup>2</sup>
Conductor cross section flexible max	16 mm <sup>2</sup>
Conductor cross section solid min	0.2 mm <sup>2</sup>
Conductor cross section solid max	25 mm <sup>2</sup>

### Ratings - IEC

Connection in acc. with standard	IEC 60947-7-1
Nominal Voltage $U_n$	1000 V
Nominal Current $I_n$	76 A
Nominal cross section	16 mm <sup>2</sup>
Short-time current	1.92 kA
Rated surge voltage	8 kV
Degree of pollution	3

### Ratings - ATEX

ATEX Standard	
ATEX Nominal Voltage $U_n$	V
ATEX Nominal Current $I_n$	A
ATEX Cross Sec. Flexible Max.	mm <sup>2</sup>

### Ratings - CSA


CSA Standard	
B - CSA Nominal Voltage $U_N$	V
B - CSA Nominal Current $I_N$	A
B - CSA Wire Min	AWG
B - CSA Wire Max	AWG

### Ratings - UL

UL Standard	UL 1059
B - UL Nominal Voltage $U_N$	600 V
B - UL Nominal Current $I_N$	85 A
B - UL Wire Min	24 AWG
B - UL Wire Max	4 AWG

### Product Accessories

#### DIN Rail Perforated

CHKDS	Height : 15.00 mm Width : 35.00 mm Thickness : 1.50 mm	
CHKS	Height : 7.50 mm Width : 35.00 mm Thickness : 1.00 mm	

<b>DIN Rail, Unperforated</b>		
CHKD	Height : 15.00 mm Width : 35.00 mm Thickness : 1.50 mm	
CHK	Height : 7.50 mm Width : 35.00 mm Thickness : 1.00 mm	
<b>End Cap</b>		
CHKENDCAP	Height : 14.00 mm Width : 9.00 mm Length : 41.50 mm	
<b>End Clamp</b>		
SCUP	Height : 34.00 mm Length : 44.75 mm	
SCEC35	Height : 31.50 mm Width : 8.00 mm Length : 45.80 mm	
SCUSL	Height : 41.10 mm Width : 8.00 mm Length : 47.50 mm	
SCUDD	Height : 50.00 mm Width : 10.00 mm Length : 55.60 mm	
DCKN	Height : 33.00 mm Width : 6.00 mm Length : 43.50 mm	
DCKN10	Height : 35.00 mm Width : 10.00 mm Length : 43.50 mm	
SCKN	Height : 34.50 mm Width : 8.00 mm Length : 44.90 mm	
SCUN	Height : 35.50 mm Width : 9.50 mm Length : 50.60 mm	

Marker For Terminal Blocks		
LABEL KN12	Width : 12.00 mm	
Pick-off Terminal Block		
TQCPT4	Height : 28.20 mm Width : 8.00 mm Pitch : 8.00 mm Length : 40.25 mm	
Plug-in Bridge/Jumper		
MLPU12-2W	Pitch : 12.00 mm	
Marker carriers		
SCUDDMLH	Height : 71.50 mm Width : 10.00 mm Length : 55.60 mm	
SCUNMLH	Height : 53.50 mm Width : 9.50 mm Length : 50.60 mm	
DCKNMLH	Height : 45.50 mm Width : 6.00 mm Length : 43.50 mm	
SCKNMLH	Height : 45.50 mm Width : 8.00 mm Length : 44.90 mm	