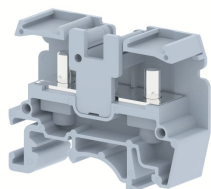


ONTM4-10C

Terminal Type - ONTM4-10C , Feed Through Terminal Block , nominal voltage: 1000 V, nominal current: 57 A, connection method : Bolt Connection - Screw and Nut driver operated, number of connections: 2, Rated Cross-section : 10 mm² , cross section: 1.5 mm² - 10 mm², mounting type: TS 35/7.5, TS 35/15 , TS 32



Approvals

CE

General Information

Product Name	ONTM4-10C
Connection Method	Bolt Connection
Rating	1000 V/57 A/10 mm ² /1.2 Nm
HSN Number	85389000
Standard Packing Qty(in No)	50
Country Of Origin	India
Screw thread	M4

Dimensions & Weight

Width	13 mm	0.51 inch
Length	48 mm	1.89 inch
Height	36.5 mm	1.44 inch
Weight of std. Packing Unit	1.08 Kg	

Material Data

Insulating Material	Polyamide 6,6
Standard Colour	Gray
Colour Variants	Red , Yellow , Blue , Black , Green , Khakhi ,

Rated Conductor Size

Conductor cross section flexible min	1.5 mm ²
Conductor cross section flexible max	10 mm ²
Conductor cross section solid min	1.5 mm ²
Conductor cross section solid max	10 mm ²

Ratings - IEC



Connection in acc. with standard	IEC 60947-7-1
Nominal Voltage U_n	1000 V
Nominal Current I_n	57 A
Nominal cross section	10 mm ²
Short-time current	1.2 kA
Rated surge voltage	8 kV
Degree of pollution	3

Product Accessories

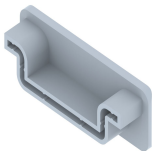
DIN Rail Perforated

CHKDS	Height : 15.00 mm Width : 35.00 mm Thickness : 1.50 mm	
CHKS	Height : 7.50 mm Width : 35.00 mm Thickness : 1.00 mm	
CHS	Height : 15.00 mm Width : 32.00 mm Thickness : 1.50 mm	

DIN Rail, Unperforated

CHKD	Height : 15.00 mm Width : 35.00 mm Thickness : 1.50 mm	
CHK	Height : 7.50 mm Width : 35.00 mm Thickness : 1.00 mm	

End Cap

CHKENDCAP	Height : 14.00 mm Width : 9.00 mm Length : 41.50 mm	
-----------	---	---

End Clamp

SCUP	Height : 34.00 mm Length : 44.75 mm	
------	--	---

End Clamp		
SCEC35	Height : 31.50 mm Width : 8.00 mm Length : 45.80 mm	
SCUDD	Height : 50.00 mm Width : 10.00 mm Length : 55.60 mm	
SCUSL	Height : 41.10 mm Width : 8.00 mm Length : 47.50 mm	
DCKN	Height : 33.00 mm Width : 6.00 mm Length : 43.50 mm	
DCKN10	Height : 35.00 mm Width : 10.00 mm Length : 43.50 mm	
SCKN	Height : 34.50 mm Width : 8.00 mm Length : 44.90 mm	
SCUN	Height : 35.50 mm Width : 9.50 mm Length : 50.60 mm	
End Cover		
ONTEP	Height : 22.80 mm Width : 47.80 mm Thickness : 2.00 mm Length : 47.80 mm	
Fixed Bridge		
CCLAONT13-2W	Pitch : 13.00 mm	
CCLAONT13-10W	Pitch : 13.00 mm	
CCLAONT13-3W	Pitch : 13.00 mm	

Fixed Bridge		
CCLAONT13-4W	Pitch : 13.00 mm	
CCLAONT13-5W	Pitch : 13.00 mm	
Marker For Terminal Blocks		
ONTML13	Pitch : 13.00 mm	
Partition Plate		
KBXF	Height : 53.40 mm Thickness : 1.50 mm Length : 54.00 mm	
Marker carriers		
SCUNMLH	Height : 53.50 mm Width : 9.50 mm Length : 50.60 mm	
GMH 20	Height : 51.00 mm Width : 20.00 mm Length : 41.50 mm	
GMH10	Height : 51.00 mm Width : 10.00 mm Length : 41.50 mm	
SCKNMLH	Height : 45.50 mm Width : 8.00 mm Length : 44.90 mm	