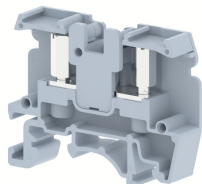


## ONTM3-6C

Terminal Type - ONTM3-6C , Feed Through Terminal Block , nominal voltage: 1000 V, nominal current: 41 A, connection method : Bolt Connection - Screw and Nut driver operated, number of connections: 2, Rated Cross-section : 6 mm<sup>2</sup> , cross section: 0.5 mm<sup>2</sup> - 6 mm<sup>2</sup>, mounting type: TS 35/7.5, TS 35/15 , TS 32



### Approvals

CE

### General Information

Product Name	ONTM3-6C
Connection Method	Bolt Connection
Rating	1000 V/41 A/6 mm <sup>2</sup> /0.5 Nm
HSN Number	85389000
Standard Packing Qty(in No)	100
Country Of Origin	India
Screw thread	M3

### Dimensions & Weight

Width	9 mm	0.35 inch
Length	48 mm	1.89 inch
Height	36.5 mm	1.44 inch
Weight of std. Packing Unit	1.3 Kg	

### Material Data

Insulating Material	Polyamide 6,6
Standard Colour	Gray
Colour Variants	Red , Yellow , Blue , Black , Green , Khakhi ,

### Rated Conductor Size

Conductor cross section flexible min	0.5 mm <sup>2</sup>
Conductor cross section flexible max	6 mm <sup>2</sup>
Conductor cross section solid min	0.5 mm <sup>2</sup>
Conductor cross section solid max	6 mm <sup>2</sup>

## Ratings - IEC



Connection in acc. with standard	IEC 60947-7-1
Nominal Voltage $U_n$	1000 V
Nominal Current $I_n$	41 A
Nominal cross section	6 mm <sup>2</sup>
Short-time current	0.72 kA
Rated surge voltage	8 kV
Degree of pollution	3

## Product Accessories

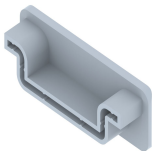
### DIN Rail Perforated

CHKDS	Height : 15.00 mm Width : 35.00 mm Thickness : 1.50 mm	
CHKS	Height : 7.50 mm Width : 35.00 mm Thickness : 1.00 mm	
CHS	Height : 15.00 mm Width : 32.00 mm Thickness : 1.50 mm	

### DIN Rail, Unperforated

CHKD	Height : 15.00 mm Width : 35.00 mm Thickness : 1.50 mm	
CHK	Height : 7.50 mm Width : 35.00 mm Thickness : 1.00 mm	

### End Cap

CHKENDCAP	Height : 14.00 mm Width : 9.00 mm Length : 41.50 mm	
-----------	---	---

### End Clamp

SCUP	Height : 34.00 mm Length : 44.75 mm	
------	--	---

End Clamp		
SCEC35	Height : 31.50 mm Width : 8.00 mm Length : 45.80 mm	
SCUDD	Height : 50.00 mm Width : 10.00 mm Length : 55.60 mm	
SCUSL	Height : 41.10 mm Width : 8.00 mm Length : 47.50 mm	
DCKN	Height : 33.00 mm Width : 6.00 mm Length : 43.50 mm	
DCKN10	Height : 35.00 mm Width : 10.00 mm Length : 43.50 mm	
SCKN	Height : 34.50 mm Width : 8.00 mm Length : 44.90 mm	
SCUN	Height : 35.50 mm Width : 9.50 mm Length : 50.60 mm	
End Cover		
ONTEP	Height : 22.80 mm Width : 47.80 mm Thickness : 2.00 mm Length : 47.80 mm	
Fixed Bridge		
CCLAONT9-2W	Pitch : 9.00 mm	
CCLAONT9-10W	Pitch : 9.00 mm	
CCLAONT9-3W	Pitch : 9.00 mm	

<b>Fixed Bridge</b>		
CCLAONT9-4W	Pitch : 9.00 mm	
CCLAONT9-5W	Pitch : 9.00 mm	
<b>Marker For Terminal Blocks</b>		
ONTML9	Width : 8.50 mm Pitch : 9.00 mm	
<b>Partition Plate</b>		
KBXF	Height : 53.40 mm Thickness : 1.50 mm Length : 54.00 mm	
<b>Marker carriers</b>		
GMH 20	Height : 51.00 mm Width : 20.00 mm Length : 41.50 mm	
GMH10	Height : 51.00 mm Width : 10.00 mm Length : 41.50 mm	
SCUNMLH	Height : 53.50 mm Width : 9.50 mm Length : 50.60 mm	
SCKNMLH	Height : 45.50 mm Width : 8.00 mm Length : 44.90 mm	