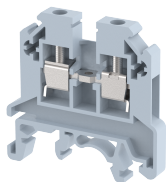


## KUTM2.5

Terminal Type - KUTM2.5 , Feed-through terminal block, nominal voltage: 800 V, nominal current: 24 A, connection method: Screw connection, number of connections: 2, Rated cross section: 2.5 mm<sup>2</sup> , cross section: 0.5 mm<sup>2</sup> – 4.0 mm<sup>2</sup>, mounting type: TS35/7.5 , TS35/15 , TS32 and TS15



### Approvals

CE

### General Information

Product Name	KUTM2.5
Connection Method	Screw Connection
Rating	800 V/24 A/2.5 mm <sup>2</sup> /0.5 Nm
HSN Number	85389000
Standard Packing Qty(in No)	100
Country Of Origin	India
Screw thread	M2.6

### Dimensions & Weight

Width	5 mm	0.2 inch
Length	42.5 mm	1.67 inch
Height	41 mm	1.61 inch
Weight of std. Packing Unit	0.66 Kg	

### Material Data

Insulating Material	Polyamide 6,6
Standard Colour	Gray
Colour Variants	Red , Yellow , Blue , Black , Green , Khakhi ,

### Rated Conductor Size

Conductor cross section flexible min	0.5 mm <sup>2</sup>
Conductor cross section flexible max	2.5 mm <sup>2</sup>
Conductor cross section solid min	0.5 mm <sup>2</sup>
Conductor cross section solid max	4 mm <sup>2</sup>

**Ratings - IEC**

Connection in acc. with standard	IEC 60947-7-1
Nominal Voltage $U_n$	800 V
Nominal Current $I_n$	24 A
Nominal cross section	2.5 mm <sup>2</sup>
Short-time current	0.3 kA
Rated surge voltage	8 kV
Degree of pollution	3

