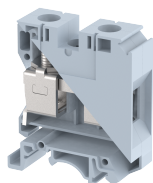


## KUT35A

Terminal Type - KUT35 , Feed-through terminal block, nominal voltage: 1000 V, nominal current: 125 A, connection method: Screw connection, Operated by: 3mm Allen Key, number of connections: 2, cross section: 10 mm<sup>2</sup> - 35 mm<sup>2</sup>, AWG: 8 - 1, width: 17 mm , length: 51 mm , Height : 58 mm , mounting type: TS35/7.5 , TS35/15 , and TS32



### Approvals

CE

### General Information

Product Name	KUT35A
Connection Method	Screw Connection
Rating	1000 V/125 A/35 mm <sup>2</sup> /2.5 Nm
HSN Number	85389000
Standard Packing Qty(in No)	50
Country Of Origin	India
Screw thread	M6

### Dimensions & Weight

Width	17 mm	0.67 inch
Length	51 mm	2.01 inch
Height	58 mm	2.28 inch
Weight of std. Packing Unit	2.9 Kg	

### Material Data

Insulating Material	Polyamide 6,6
Standard Colour	Gray
Colour Variants	

### Rated Conductor Size

Conductor cross section flexible min	10 mm <sup>2</sup>
Conductor cross section flexible max	35 mm <sup>2</sup>
Conductor cross section solid min	10 mm <sup>2</sup>
Conductor cross section solid max	35 mm <sup>2</sup>

**Ratings - IEC**

Connection in acc. with standard	IEC-60947-7-1
Nominal Voltage $U_n$	1000 V
Nominal Current $I_n$	125 A
Nominal cross section	35 mm <sup>2</sup>
Short-time current	4.2 kA
Rated surge voltage	8 kV
Degree of pollution	3

