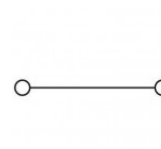
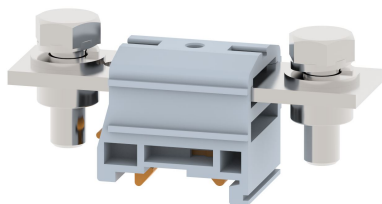


DPBB120CN

Terminal Type - DPBB120CN , High Current connectors , nominal voltage: 1000 V, nominal current: 269 A, connection method: Bolt connection with clinch nut, number of connections: 2, cross section: 25 mm² - 120 mm² , AWG: 4 - 3/0, width: 37 mm , length: 100 mm , height : 44 mm , mounting type: TS 35/7.5, TS 35/15 , TS 32



Approvals

CE

General Information

Product Name	DPBB120CN
Connection Method	Bolt Connection
Rating	1000 V/269 A/120 mm ² /6 Nm
HSN Number	85389000
Standard Packing Qty(in No)	10
Country Of Origin	India
Screw thread	M8

Dimensions & Weight

Width	37 mm	1.46 inch
Length	100 mm	3.94 inch
Height	44 mm	1.73 inch
Weight of std. Packing Unit	1.59 Kg	

Material Data

Insulating Material	Polyamide 6,6
Standard Colour	Gray
Colour Variants	Red , Yellow , Blue , Black , Green , Khakhi ,

Rated Conductor Size

Conductor cross section flexible min	25 mm ²
Conductor cross section flexible max	120 mm ²
Conductor cross section solid min	25 mm ²
Conductor cross section solid max	120 mm ²

Ratings - IEC

Connection in acc. with standard	IEC 60947-7-1
Nominal Voltage U_n	1000 V
Nominal Current I_n	269 A
Nominal cross section	120 mm ²
Short-time current	14.40 kA
Rated surge voltage	12 kV
Degree of pollution	3

