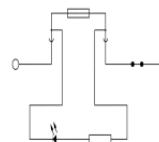
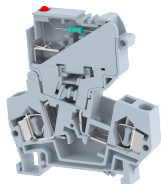


DCF4D2

Terminal Type - DCF4D2 , Fuse terminal block with LED of 48 VDC for fuse failure indication , nominal voltage: 48 V, nominal current: 10 A , suitable size of cartridge fuse : 5X20 mm and 5x25 mm, connection method: Spring Cage connection, number of connections: 2, cross section: 0.5 mm² - 4 mm², AWG: 20 - 10 , width: 8 mm , length: 60 mm , height : 64.8 mm , mounting type: TS 35/7.5, TS 35/15



Approvals

CE

General Information

Product Name	DCF4D2
Connection Method	Spring Cage Connection
Rating	48 V/10 A/4 mm ² / Nm
HSN Number	85389000
Standard Packing Qty(in No)	50
Country Of Origin	India
Screw thread	NAP

Dimensions & Weight

Width	8 mm	0.31 inch
Length	60 mm	2.36 inch
Height	64.8 mm	2.55 inch
Weight of std. Packing Unit	1 Kg	

Material Data

Insulating Material	Polyamide 6,6
Standard Colour	Gray
Colour Variants	Red , Yellow , Blue , Black , Green , Khakhi ,

Rated Conductor Size

Conductor cross section flexible min	0.5 mm ²
Conductor cross section flexible max	4 mm ²
Conductor cross section solid min	0.5 mm ²
Conductor cross section solid max	4 mm ²

Ratings - IEC

Connection in acc. with standard	IEC 60947-7-3
Nominal Voltage U_n	48 V
Nominal Current I_n	10 A
Nominal cross section	4 mm ²
Short-time current	NAP kA
Rated surge voltage	8 kV
Degree of pollution	3

