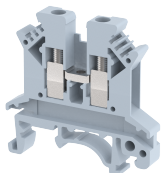


## UBT2.5N

Terminal Type - UBT2.5N , Feed-through terminal block, nominal voltage: 1000 V, nominal current: 28 A, connection method: Screw connection, number of connections: 2, cross section: 0.5 mm<sup>2</sup> - 4 mm<sup>2</sup>, AWG: 24 - 12, width: 6 mm , length: 42.5 mm , height : 40.7 mm , mounting type: TS 35/7.5, TS 35/15 , TS 32



### Approvals

CE

### General Information

Product Name	UBT2.5N
Connection Method	Screw Connection
Rating	1000 V/28 A/2.5 mm <sup>2</sup> /0.5 Nm
HSN Number	85389000
Standard Packing Qty(in No)	100
Country Of Origin	INDIA
Screw thread	M3

### Dimensions & Weight

Width	6 mm	0.24 inch
Length	42.5 mm	1.67 inch
Height	40.7 mm	1.6 inch
Weight of std. Packing Unit	0.43 Kg	

### Material Data

Insulating Material	Polyamide 6,6
Standard Colour	Gray
Colour Variants	Red , Yellow , Blue , Black , Green , Khakhi ,

### Rated Conductor Size

Conductor cross section flexible min	0.5 mm <sup>2</sup>
Conductor cross section flexible max	2.5 mm <sup>2</sup>
Conductor cross section solid min	0.5 mm <sup>2</sup>
Conductor cross section solid max	4 mm <sup>2</sup>

### Ratings - IEC

Connection in acc. with standard	IEC 60947-7-1
Nominal Voltage $U_n$	1000 V
Nominal Current $I_n$	28 A
Nominal cross section	2.5 mm <sup>2</sup>
Short-time current	0.3 kA
Rated surge voltage	8 kV
Degree of pollution	3

### Ratings - ATEX

ATEX Standard	
ATEX Nominal Voltage $U_n$	0 V
ATEX Nominal Current $I_n$	A
ATEX Cross Sec. Flexible Max.	mm <sup>2</sup>

### Ratings - CSA

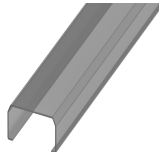
CSA Standard	CSA C22.2 NO 158
B - CSA Nominal Voltage $U_n$	600 V
B - CSA Nominal Current $I_n$	27 A
B - CSA Wire Min	24 AWG
B - CSA Wire Max	12 AWG

### Ratings - UL

UL Standard	UL 1059
B - UL Nominal Voltage $U_n$	600 V
B - UL Nominal Current $I_n$	27 A
B - UL Wire Min	24 AWG
B - UL Wire Max	12 AWG

### Product Accessories

#### Cover Profile

PCK3	Height : 28.00 mm Width : 58.35 mm Thickness : 1.00 mm	
------	--------------------------------------------------------------	---------------------------------------------------------------------------------------

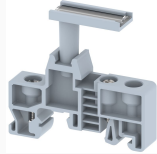
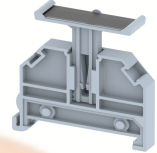
#### Cover Profile Carrier

UHDD	Height : 74.50 mm Thickness : 2.00 mm Length : 55.82 mm	
------	---------------------------------------------------------------	---------------------------------------------------------------------------------------

<b>DIN Rail Perforated</b>		
CHKDS	Height : 15.00 mm Width : 35.00 mm Thickness : 1.50 mm	
CHKS	Height : 7.50 mm Width : 35.00 mm Thickness : 1.00 mm	
CHS	Height : 15.00 mm Width : 32.00 mm Thickness : 1.50 mm	
<b>DIN Rail, Unperforated</b>		
CHKD	Height : 15.00 mm Width : 35.00 mm Thickness : 1.50 mm	
CHK	Height : 7.50 mm Width : 35.00 mm Thickness : 1.00 mm	
<b>End Cap</b>		
CHKENDCAP	Height : 14.00 mm Width : 9.00 mm Length : 41.50 mm	
<b>End Clamp</b>		
SCUP	Height : 34.00 mm Length : 44.75 mm	
SCUSL	Height : 41.10 mm Width : 8.00 mm Length : 47.50 mm	
SCUDD	Height : 50.00 mm Width : 10.00 mm Length : 55.60 mm	
DCKN	Height : 33.00 mm Width : 6.00 mm Length : 43.50 mm	

<b>End Clamp</b>		
DCKN10	Height : 35.00 mm Width : 10.00 mm Length : 43.50 mm	
SCKN	Height : 34.50 mm Width : 8.00 mm Length : 44.90 mm	
SCUN	Height : 35.50 mm Width : 9.50 mm Length : 50.60 mm	
<b>End Cover</b>		
UPNS	Height : 63.00 mm Width : 2.00 mm Length : 85.00 mm	
<b>Fixed Bridge</b>		
SLU4-10W	Height : 13.00 mm Pitch : 6.00 mm Length : 58.40 mm	
SLU4-2W	Height : 13.00 mm Pitch : 6.00 mm Length : 10.40 mm	
SLU4-3W	Height : 13.00 mm Pitch : 6.00 mm Length : 16.40 mm	
SLU4-4W	Height : 13.00 mm Pitch : 6.00 mm Length : 22.40 mm	
SLU4-5W	Height : 13.00 mm Pitch : 6.00 mm Length : 28.40 mm	
<b>Marker For Terminal Blocks</b>		
LABEL U6	Pitch : 6.00 mm	

Partition Plate		
KBXF	Height : 53.40 mm Thickness : 1.50 mm Length : 54.00 mm	

Marker carriers		
SCUDDMLH	Height : 71.50 mm Width : 10.00 mm Length : 55.60 mm	
SCUNMLH	Height : 53.50 mm Width : 9.50 mm Length : 50.60 mm	
DCKNMLH	Height : 45.50 mm Width : 6.00 mm Length : 43.50 mm	
SCKNMLH	Height : 45.50 mm Width : 8.00 mm Length : 44.90 mm	