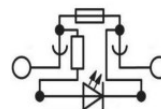
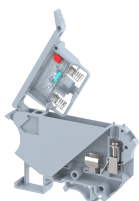


UBDF4D1

Terminal Type - UBDF4D1, Fuse terminal block with LED for 24 VDC , nominal voltage: 24 V, nominal current: 6.3 A, Rated cross-section - 4 mm², suitable size of cartridge fuse : 5X20 mm and 5X25 mm, connection method: Screw connection, number of connections: 2, cross-section: 0.5 mm² - 6 mm², AWG: 24 -10, mounting type: TS 35/7.5 , TS 35/15 , TS 32



Approvals

CE

General Information

Product Name	UBDF4D1
Connection Method	Screw Connection
Rating	24 V/6.3 A/4 mm ² /0.5 Nm
HSN Number	85389000
Standard Packing Qty(in No)	100
Country Of Origin	India
Screw thread	M3

Dimensions & Weight

Width	8.25 mm	0.32 inch
Length	72.5 mm	2.85 inch
Height	56.5 mm	2.22 inch
Weight of std. Packing Unit	1.9 Kg	

Material Data

Insulating Material	Polyamide 6,6
Standard Colour	Gray
Colour Variants	Red , Yellow , Blue , Black , Green , Khakhi ,

Rated Conductor Size

Conductor cross section flexible min	0.5 mm ²
Conductor cross section flexible max	4 mm ²
Conductor cross section solid min	0.5 mm ²
Conductor cross section solid max	6 mm ²

Ratings - IEC



Connection in acc. with standard	IEC-60947-7-3
Nominal Voltage U_n	24 V
Nominal Current I_n	6.3 A
Nominal cross section	4 mm ²
Short-time current	NAP kA
Rated surge voltage	8 kV
Degree of pollution	3

Product Accessories

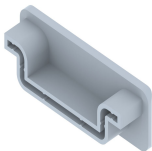
DIN Rail Perforated

CHKDS	Height : 15.00 mm Width : 35.00 mm Thickness : 1.50 mm	
CHKS	Height : 7.50 mm Width : 35.00 mm Thickness : 1.00 mm	
CHS	Height : 15.00 mm Width : 32.00 mm Thickness : 1.50 mm	

DIN Rail, Unperforated

CHKD	Height : 15.00 mm Width : 35.00 mm Thickness : 1.50 mm	
CHK	Height : 7.50 mm Width : 35.00 mm Thickness : 1.00 mm	

End Cap

CHKENDCAP	Height : 14.00 mm Width : 9.00 mm Length : 41.50 mm	
-----------	---	---

End Clamp

SCUP	Height : 34.00 mm Length : 44.75 mm	
------	--	---

End Clamp		
SCUSL	Height : 41.10 mm Width : 8.00 mm Length : 47.50 mm	
SCUDD	Height : 50.00 mm Width : 10.00 mm Length : 55.60 mm	
DCKN	Height : 33.00 mm Width : 6.00 mm Length : 43.50 mm	
DCKN10	Height : 35.00 mm Width : 10.00 mm Length : 43.50 mm	
SCKN	Height : 34.50 mm Width : 8.00 mm Length : 44.90 mm	
SCUN	Height : 35.50 mm Width : 9.50 mm Length : 50.60 mm	
Insertion Bridge		
CLUF-2W	Width : 13.80 mm Pitch : 8.40 mm Length : 22.20 mm	
CLUF-10W	Width : 81.00 mm Pitch : 8.40 mm Length : 22.20 mm	
Marker For Terminal Blocks		
LABEL U8.25		
Marker carriers		
SCUDDMLH	Height : 71.50 mm Width : 10.00 mm Length : 55.60 mm	

Marker carriers		
SCUNMLH	Height : 53.50 mm Width : 9.50 mm Length : 50.60 mm	
DCKNMLH	Height : 45.50 mm Width : 6.00 mm Length : 43.50 mm	
SCKNMLH	Height : 45.50 mm Width : 8.00 mm Length : 44.90 mm	

