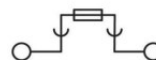
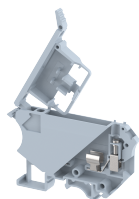


UBDF4

Terminal Type - UBDF4, Fuse terminal block, nominal voltage: 1000 V, nominal current: 6.3 A, Rated cross-section – 4 mm², suitable size of cartridge fuse: 5X20 mm and 5X25 mm, connection method: Screw connection, number of connections: 2, cross section: 0.5 mm² - 6 mm², AWG: 24 -10, mounting type: TS 35/7.5, TS 35/15, TS 32



Approvals



General Information

Product Name	UBDF4
Connection Method	Screw Connection
Rating	1000 V/6.3 A/4 mm ² /0.5 Nm
HSN Number	85389000
Standard Packing Qty(in No)	100
Country Of Origin	India
Screw thread	M3

Dimensions & Weight

Width	8.25 mm	0.32 inch
Length	72.5 mm	2.85 inch
Height	56.5 mm	2.22 inch
Weight of std. Packing Unit	1.9 Kg	

Material Data

Insulating Material	Polyamide 6,6
Standard Colour	Gray
Colour Variants	Red , Yellow , Blue , Black , Green , Khakhi ,

Rated Conductor Size

Conductor cross section flexible min	0.5 mm ²
Conductor cross section flexible max	4 mm ²
Conductor cross section solid min	0.5 mm ²
Conductor cross section solid max	6 mm ²

Ratings - IEC

Connection in acc. with standard	IEC-60947-7-3
Nominal Voltage U_n	1000 V
Nominal Current I_n	6.3 A
Nominal cross section	4 mm ²
Short-time current	NAP kA
Rated surge voltage	8 kV
Degree of pollution	3

Ratings - ATEX

ATEX Standard	
ATEX Nominal Voltage U_n	750 V
ATEX Nominal Current I_n	4 A
ATEX Cross Sec. Flexible Max.	4 mm ²

Ratings - CSA

CSA Standard	CSA C22.2 NO 158
B - CSA Nominal Voltage U_N	600 V
B - CSA Nominal Current I_N	10 A
B - CSA Wire Min	24 AWG
B - CSA Wire Max	10 AWG

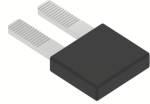
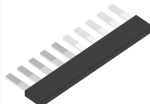
Ratings - UL

UL Standard	UL 1059
B - UL Nominal Voltage U_N	600 V
B - UL Nominal Current I_N	10 A
B - UL Wire Min	24 AWG
B - UL Wire Max	10 AWG

Product Accessories

DIN Rail Perforated		
CHKDS	Height : 15.00 mm Width : 35.00 mm Thickness : 1.50 mm	
CHKS	Height : 7.50 mm Width : 35.00 mm Thickness : 1.00 mm	
CHS	Height : 15.00 mm Width : 32.00 mm Thickness : 1.50 mm	

DIN Rail, Unperforated		
CHKD	Height : 15.00 mm Width : 35.00 mm Thickness : 1.50 mm	
CHK	Height : 7.50 mm Width : 35.00 mm Thickness : 1.00 mm	
End Cap		
CHKENDCAP	Height : 14.00 mm Width : 9.00 mm Length : 41.50 mm	
End Clamp		
SCUP	Height : 34.00 mm Length : 44.75 mm	
SCUSL	Height : 41.10 mm Width : 8.00 mm Length : 47.50 mm	
SCUDD	Height : 50.00 mm Width : 10.00 mm Length : 55.60 mm	
DCKN	Height : 33.00 mm Width : 6.00 mm Length : 43.50 mm	
DCKN10	Height : 35.00 mm Width : 10.00 mm Length : 43.50 mm	
SCKN	Height : 34.50 mm Width : 8.00 mm Length : 44.90 mm	
SCUN	Height : 35.50 mm Width : 9.50 mm Length : 50.60 mm	

Insertion Bridge		
CLUF-2W	Width : 13.80 mm Pitch : 8.40 mm Length : 22.20 mm	
CLUF-10W	Width : 81.00 mm Pitch : 8.40 mm Length : 22.20 mm	

Marker For Terminal Blocks		
LABEL U8.25		

Marker carriers		
SCUDDMLH	Height : 71.50 mm Width : 10.00 mm Length : 55.60 mm	
SCUNMLH	Height : 53.50 mm Width : 9.50 mm Length : 50.60 mm	
DCKNMLH	Height : 45.50 mm Width : 6.00 mm Length : 43.50 mm	
SCKNMLH	Height : 45.50 mm Width : 8.00 mm Length : 44.90 mm	