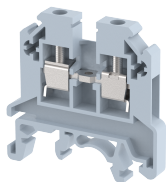


KUTM2.5

Terminal Type - KUTM2.5 , Feed-through terminal block, nominal voltage: 800 V, nominal current: 24 A, connection method: Screw connection, number of connections: 2, Rated cross section: 2.5 mm² , cross section: 0.5 mm² – 4.0 mm², mounting type: TS35/7.5 , TS35/15 , TS32 and TS15



Approvals

CE

General Information

Product Name	KUTM2.5
Connection Method	Screw Connection
Rating	800 V/24 A/2.5 mm ² /0.5 Nm
HSN Number	85389000
Standard Packing Qty(in No)	100
Country Of Origin	India
Screw thread	M2.6

Dimensions & Weight

Width	5 mm	0.2 inch
Length	42.5 mm	1.67 inch
Height	41 mm	1.61 inch
Weight of std. Packing Unit	0.66 Kg	

Material Data

Insulating Material	Polyamide 6,6
Standard Colour	Gray
Colour Variants	Red , Yellow , Blue , Black , Green , Khakhi ,

Rated Conductor Size

Conductor cross section flexible min	0.5 mm ²
Conductor cross section flexible max	2.5 mm ²
Conductor cross section solid min	0.5 mm ²
Conductor cross section solid max	4 mm ²

Ratings - IEC

Connection in acc. with standard	IEC 60947-7-1
Nominal Voltage U_n	800 V
Nominal Current I_n	24 A
Nominal cross section	2.5 mm ²
Short-time current	0.3 kA
Rated surge voltage	8 kV
Degree of pollution	3

Product Accessories

Cover Profile

PCK3	Height : 28.00 mm Width : 58.35 mm Thickness : 1.00 mm	
------	--	---

Cover Profile Carrier

UHDD	Height : 74.50 mm Thickness : 2.00 mm Length : 55.82 mm	
------	---	--

DIN Rail Perforated

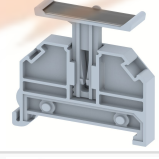
CHM	Height : 5.00 mm Width : 15.00 mm Thickness : 1.00 mm	
CHKDS	Height : 15.00 mm Width : 35.00 mm Thickness : 1.50 mm	
CHKS	Height : 7.50 mm Width : 35.00 mm Thickness : 1.00 mm	
CHS	Height : 15.00 mm Width : 32.00 mm Thickness : 1.50 mm	

DIN Rail, Unperforated

CHKD	Height : 15.00 mm Width : 35.00 mm Thickness : 1.50 mm	
------	--	---

DIN Rail, Unperforated		
CHK	Height : 7.50 mm Width : 35.00 mm Thickness : 1.00 mm	
End Cap		
CHKENDCAP	Height : 14.00 mm Width : 9.00 mm Length : 41.50 mm	
End Clamp		
SCUP	Height : 34.00 mm Length : 44.75 mm	
SCUSL	Height : 41.10 mm Width : 8.00 mm Length : 47.50 mm	
SCUDD	Height : 50.00 mm Width : 10.00 mm Length : 55.60 mm	
DCKN	Height : 33.00 mm Width : 6.00 mm Length : 43.50 mm	
DCKN10	Height : 35.00 mm Width : 10.00 mm Length : 43.50 mm	
SCKN	Height : 34.50 mm Width : 8.00 mm Length : 44.90 mm	
SCUN	Height : 35.50 mm Width : 9.50 mm Length : 50.60 mm	
End Cover		
KPNS	Height : 31.00 mm Thickness : 1.50 mm Length : 36.50 mm	

Fixed Bridge		
CCLK2.5-2W	Height : 14.30 mm Pitch : 5.00 mm Length : 9.40 mm	
CCLK2.5-4W	Height : 14.30 mm Pitch : 5.00 mm Length : 19.40 mm	
CCLK2.5-10W	Height : 14.30 mm Pitch : 5.00 mm Length : 49.40 mm	
CCLK2.5-3W	Height : 14.30 mm Pitch : 5.00 mm Length : 14.40 mm	
CCLK2.5-6W	Height : 14.30 mm Pitch : 5.00 mm Length : 29.40 mm	
Insertion Bridge		
SLC2.5N-2W	Width : 9.60 mm Pitch : 5.00 mm Length : 23.00 mm	
SLC2.5N-10W	Width : 49.20 mm Pitch : 5.00 mm Length : 23.00 mm	
SLC2.5N-3W	Width : 14.60 mm Pitch : 5.00 mm Length : 23.00 mm	
SLC2.5N-4W	Width : 19.60 mm Pitch : 5.00 mm Length : 23.00 mm	
SLC2.5N-5W	Width : 24.60 mm Pitch : 5.00 mm Length : 23.00 mm	
Marker For Terminal Blocks		
LABEL KN5	Width : 5.00 mm	

Partition Plate		
KBXF	Height : 53.40 mm Thickness : 1.50 mm Length : 54.00 mm	
KBM	Height : 37.50 mm Thickness : 1.50 mm Length : 50.50 mm	
Warning Label		
WL2.5N	Height : 24.00 mm Thickness : 1.10 mm Length : 24.00 mm	
Marker carriers		
SCUDDMLH	Height : 71.50 mm Width : 10.00 mm Length : 55.60 mm	
SCUNMLH	Height : 53.50 mm Width : 9.50 mm Length : 50.60 mm	
DCKNMLH	Height : 45.50 mm Width : 6.00 mm Length : 43.50 mm	
SCKNMLH	Height : 45.50 mm Width : 8.00 mm Length : 44.90 mm	