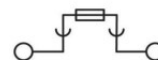
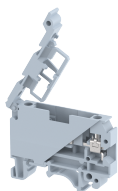


KUDF4

Terminal Type - KUDF4 , Fuse terminal block, nominal voltage: 800 V, nominal current: 6.3 A , suitable size of cartridge fuse : 5X20 mm and 5X25 mm , connection method: Screw connection, number of connections: 2, cross section: 0.5 mm² - 4 mm², AWG: 20 - 12, width: 8 mm , length: 54.5 mm , height : 44 mm , mounting type: TS 35/7.5, TS 35/15 , TS 32



Approvals

CE

General Information

| | |
|-----------------------------|---------------------------------------|
| Product Name | KUDF4 |
| Connection Method | Screw Connection |
| Rating | 800 V/6.3 A/4 mm ² /0.5 Nm |
| HSN Number | 85389000 |
| Standard Packing Qty(in No) | 100 |
| Country Of Origin | India |
| Screw thread | M3 |

Dimensions & Weight

| | | |
|-----------------------------|---------|-----------|
| Width | 8 mm | 0.31 inch |
| Length | 54.5 mm | 2.15 inch |
| Height | 44 mm | 1.73 inch |
| Weight of std. Packing Unit | 1.49 Kg | |

Material Data

| | |
|---------------------|--|
| Insulating Material | Polyamide 6,6 |
| Standard Colour | Gray |
| Colour Variants | Red , Yellow , Blue , Black , Green , Khakhi , |

Rated Conductor Size

| | |
|--------------------------------------|---------------------|
| Conductor cross section flexible min | 0.5 mm ² |
| Conductor cross section flexible max | 4 mm ² |
| Conductor cross section solid min | 0.5 mm ² |
| Conductor cross section solid max | 4 mm ² |

Ratings - IEC



| | |
|----------------------------------|-------------------|
| Connection in acc. with standard | IEC 60947-7-3 |
| Nominal Voltage U_n | 800 V |
| Nominal Current I_n | 6.3 A |
| Nominal cross section | 4 mm ² |
| Short-time current | NAP kA |
| Rated surge voltage | 8 kV |
| Degree of pollution | 3 |

Product Accessories

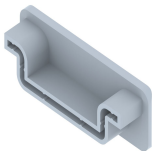
DIN Rail Perforated

| | | |
|-------|--|---|
| CHKDS | Height : 15.00 mm Width : 35.00 mm Thickness : 1.50 mm |  |
| CHKS | Height : 7.50 mm Width : 35.00 mm Thickness : 1.00 mm |  |
| CHS | Height : 15.00 mm Width : 32.00 mm Thickness : 1.50 mm |  |

DIN Rail, Unperforated

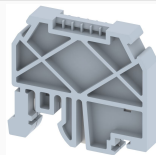
| | | |
|------|--|---|
| CHKD | Height : 15.00 mm Width : 35.00 mm Thickness : 1.50 mm |  |
| CHK | Height : 7.50 mm Width : 35.00 mm Thickness : 1.00 mm |  |

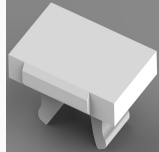
End Cap



| | | |
|-----------|---|---|
| CHKENDCAP | Height : 14.00 mm Width : 9.00 mm Length : 41.50 mm |  |
|-----------|---|---|

End Clamp

| | | |
|------|--|---|
| SCUP | Height : 34.00 mm Length : 44.75 mm |  |
|------|--|---|

| End Clamp | | |
|------------------|--|---|
| SCUSL | Height : 41.10 mm Width : 8.00 mm Length : 47.50 mm |  |
| SCUDD | Height : 50.00 mm Width : 10.00 mm Length : 55.60 mm |  |
| DCKN | Height : 33.00 mm Width : 6.00 mm Length : 43.50 mm |  |
| DCKN10 | Height : 35.00 mm Width : 10.00 mm Length : 43.50 mm |  |
| SCKN | Height : 34.50 mm Width : 8.00 mm Length : 44.90 mm |  |
| SCUN | Height : 35.50 mm Width : 9.50 mm Length : 50.60 mm |  |
| Insertion Bridge | | |
| UFSL-10W | Height : 79.50 mm Pitch : 8.20 mm Length : 22.50 mm |  |
| UFSL-3W | Width : 22.10 mm Pitch : 8.20 mm Length : 22.50 mm |  |
| UFSL-4W | Width : 30.30 mm Pitch : 8.20 mm Length : 22.50 mm |  |
| UFSL-5W | Width : 38.50 mm Pitch : 8.20 mm Length : 22.50 mm |  |
| UFSL-2W | Width : 13.00 mm Pitch : 8.20 mm Length : 22.50 mm |  |

| Marker For Terminal Blocks | | |
|----------------------------|-----------------|---|
| LABEL KN5.5 | Width : 6.00 mm |  |
| LABEL KN8 | Width : 8.00 mm |  |

| Partition Plate | | |
|-----------------|---|---|
| DBF-3 | Height : 38.40 mm Width : 3.00 mm Length : 78.00 mm |  |
| KBZF | Height : 65.00 mm Width : 1.50 mm Length : 65.00 mm |  |

| Marker carriers | | |
|-----------------|--|---|
| SCUDDMLH | Height : 71.50 mm Width : 10.00 mm Length : 55.60 mm |  |
| SCUNMLH | Height : 53.50 mm Width : 9.50 mm Length : 50.60 mm |  |
| DCKNMLH | Height : 45.50 mm Width : 6.00 mm Length : 43.50 mm |  |
| SCKNMLH | Height : 45.50 mm Width : 8.00 mm Length : 44.90 mm |  |