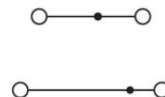
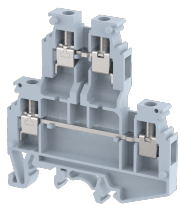


## KUDD4N

Terminal Type - KUDD4N , Multi level terminal block for photo voltaic applications, nominal voltage: 630 V, nominal current: 28 A, connection method: Screw connection, number of connections: 4, cross section: 0.5 mm<sup>2</sup> - 4 mm<sup>2</sup>, AWG: 20 - 12 , mounting type: TS 35/7.5, TS 35/15 , TS 32



### Approvals



### General Information

Product Name	KUDD4N
Connection Method	Screw Connection
Rating	630 V/28 A/4 mm <sup>2</sup> /0.5 Nm
HSN Number	85389000
Standard Packing Qty(in No)	100
Country Of Origin	INDIA
Screw thread	M3

### Dimensions & Weight

Width	6 mm	0.24 inch
Length	62.5 mm	2.46 inch
Height	65.4 mm	2.57 inch
Weight of std. Packing Unit	1.76 Kg	

### Material Data

Insulating Material	Polyamide 6,6
Standard Colour	Gray
Colour Variants	Red , Yellow , Blue , Black , Green , Khakhi ,

### Rated Conductor Size

Conductor cross section flexible min	0.5 mm <sup>2</sup>
Conductor cross section flexible max	4 mm <sup>2</sup>
Conductor cross section solid min	0.5 mm <sup>2</sup>
Conductor cross section solid max	4 mm <sup>2</sup>

### Ratings - IEC

Connection in acc. with standard	IEC 60947-7-1
Nominal Voltage $U_n$	630 V
Nominal Current $I_n$	28 A
Nominal cross section	4 mm <sup>2</sup>
Short-time current	0.48 kA
Rated surge voltage	8 kV
Degree of pollution	3

### Ratings - ATEX

ATEX Standard	
ATEX Nominal Voltage $U_n$	0 V
ATEX Nominal Current $I_n$	0 A
ATEX Cross Sec. Flexible Max.	0 mm <sup>2</sup>

### Ratings - CSA

CSA Standard	
B - CSA Nominal Voltage $U_N$	0 V
B - CSA Nominal Current $I_N$	0 A
B - CSA Wire Min	0 AWG
B - CSA Wire Max	0 AWG

### Ratings - UL

UL Standard	UL 1059
B - UL Nominal Voltage $U_N$	300 V
B - UL Nominal Current $I_N$	20 A
B - UL Wire Min	20 AWG
B - UL Wire Max	12 AWG

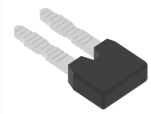
### Product Accessories

#### DIN Rail Perforated

CHKDS	Height : 15.00 mm Width : 35.00 mm Thickness : 1.50 mm	
CHKS	Height : 7.50 mm Width : 35.00 mm Thickness : 1.00 mm	
CHS	Height : 15.00 mm Width : 32.00 mm Thickness : 1.50 mm	

<b>DIN Rail, Unperforated</b>		
CHKD	Height : 15.00 mm Width : 35.00 mm Thickness : 1.50 mm	
CHK	Height : 7.50 mm Width : 35.00 mm Thickness : 1.00 mm	
<b>End Cap</b>		
CHKENDCAP	Height : 14.00 mm Width : 9.00 mm Length : 41.50 mm	
<b>End Clamp</b>		
SCUP	Height : 34.00 mm Length : 44.75 mm	
SCEC35	Height : 31.50 mm Width : 8.00 mm Length : 45.80 mm	
SCUSL	Height : 41.10 mm Width : 8.00 mm Length : 47.50 mm	
SCUDD	Height : 50.00 mm Width : 10.00 mm Length : 55.60 mm	
DCKN	Height : 33.00 mm Width : 6.00 mm Length : 43.50 mm	
DCKN10	Height : 35.00 mm Width : 10.00 mm Length : 43.50 mm	
SCKN	Height : 34.50 mm Width : 8.00 mm Length : 44.90 mm	
SCUN	Height : 35.50 mm Width : 9.50 mm Length : 50.60 mm	

<b>End Cover</b>		
KPDDN	Height : 62.50 mm Width : 1.50 mm Length : 56.00 mm	
<b>Fixed Bridge</b>		
CCLADDN-2W	Height : 14.00 mm Pitch : 6.00 mm Length : 11.00 mm	
CCLADDN-10W	Height : 14.00 mm Pitch : 6.00 mm Length : 59.00 mm	
CCLADDN-3W	Height : 14.00 mm Pitch : 6.00 mm Length : 17.00 mm	
CCLADDN-4W	Height : 14.00 mm Pitch : 6.00 mm Length : 23.00 mm	
CCLADDN-6W	Height : 14.00 mm Pitch : 6.00 mm Length : 35.00 mm	
<b>Insertion Bridge</b>		
SLC4N-10W	Width : 58.60 mm Pitch : 6.00 mm Length : 23.00 mm	
SLC4N-3W	Width : 16.65 mm Pitch : 6.00 mm Length : 23.00 mm	
SLC4N-4W	Width : 22.65 mm Pitch : 6.00 mm Length : 23.00 mm	
SLC4N-5W	Width : 28.65 mm Pitch : 6.00 mm Length : 23.00 mm	
SLC4N-6W	Width : 34.60 mm Pitch : 6.00 mm Length : 23.00 mm	

Insertion Bridge		
SLC4N-2W	Width : 10.91 mm Pitch : 6.00 mm Length : 23.00 mm	

Marker For Terminal Blocks		
LABEL KN5.5	Width : 6.00 mm	

Marker carriers		
SCUDDMLH	Height : 71.50 mm Width : 10.00 mm Length : 55.60 mm	
SCUNMLH	Height : 53.50 mm Width : 9.50 mm Length : 50.60 mm	
DCKNMLH	Height : 45.50 mm Width : 6.00 mm Length : 43.50 mm	
SCKNMLH	Height : 45.50 mm Width : 8.00 mm Length : 44.90 mm	