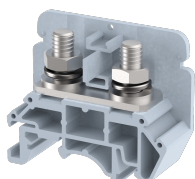


## KBTM6

Terminal Type - KBTM6 , Feed Through Terminal Block , nominal voltage: 800 V, nominal current: 101 A, connection method: Bolt Connection - Nut driver operated , number of connections: 2, cross section: 6 mm<sup>2</sup> - 25 mm<sup>2</sup>, AWG: 14 - 4, mounting type: TS 35/7.5, TS 35/15 , TS 32



### Approvals



### General Information

Product Name	KBTM6
Connection Method	Bolt Connection
Rating	800 V/101 A/25 mm <sup>2</sup> /2.5 Nm
HSN Number	85389000
Standard Packing Qty(in No)	50
Country Of Origin	INDIA
Screw thread	M6

### Dimensions & Weight

Width	17 mm	0.67 inch
Length	50 mm	1.97 inch
Height	41.4 mm	1.63 inch
Weight of std. Packing Unit	1.67 Kg	

### Material Data

Insulating Material	Polyamide 6,6
Standard Colour	Gray
Colour Variants	Red , Yellow , Blue , Black , Green , Khakhi ,

### Rated Conductor Size

Conductor cross section flexible min	6 mm <sup>2</sup>
Conductor cross section flexible max	25 mm <sup>2</sup>
Conductor cross section solid min	6 mm <sup>2</sup>
Conductor cross section solid max	25 mm <sup>2</sup>

**Ratings - IEC**

Connection in acc. with standard	IEC 60947-7-1
Nominal Voltage $U_n$	800 V
Nominal Current $I_n$	101 A
Nominal cross section	25 mm <sup>2</sup>
Short-time current	3 kA
Rated surge voltage	8 kV
Degree of pollution	3

**Ratings - ATEX**

ATEX Standard	EN 60079-7
ATEX Nominal Voltage $U_n$	800 V
ATEX Nominal Current $I_n$	76 A
ATEX Cross Sec. Flexible Max.	25 mm <sup>2</sup>

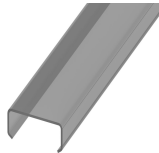


**Ratings - CSA**

CSA Standard	
B - CSA Nominal Voltage $U_N$	0 V
B - CSA Nominal Current $I_N$	0 A
B - CSA Wire Min	0 AWG
B - CSA Wire Max	0 AWG

**Ratings - UL**

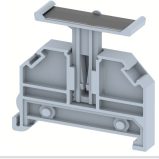
UL Standard	UL 1059
B - UL Nominal Voltage $U_N$	600 V
B - UL Nominal Current $I_N$	85 A
B - UL Wire Min	14 AWG
B - UL Wire Max	4 AWG

**Product Accessories**

Cover Profile		
PCC3K		
PCCM 51K		
PCCM34K		

DIN Rail Perforated		
CHKDS	Height : 15.00 mm Width : 35.00 mm Thickness : 1.50 mm	
CHKS	Height : 7.50 mm Width : 35.00 mm Thickness : 1.00 mm	
CHS	Height : 15.00 mm Width : 32.00 mm Thickness : 1.50 mm	
DIN Rail, Unperforated		
CHKD	Height : 15.00 mm Width : 35.00 mm Thickness : 1.50 mm	
CHK	Height : 7.50 mm Width : 35.00 mm Thickness : 1.00 mm	
End Cap		
CHKENDCAP	Height : 14.00 mm Width : 9.00 mm Length : 41.50 mm	
End Clamp		
SCUP	Height : 34.00 mm Length : 44.75 mm	
SCUSL	Height : 41.10 mm Width : 8.00 mm Length : 47.50 mm	
SCUDD	Height : 50.00 mm Width : 10.00 mm Length : 55.60 mm	
DCKN	Height : 33.00 mm Width : 6.00 mm Length : 43.50 mm	

<b>End Clamp</b>		
DCKN10	Height : 35.00 mm Width : 10.00 mm Length : 43.50 mm	
SCKN	Height : 34.50 mm Width : 8.00 mm Length : 44.90 mm	
SCUN	Height : 35.50 mm Width : 9.50 mm Length : 50.60 mm	
<b>End Cover</b>		
KPS4	Height : 32.00 mm Width : 1.50 mm Length : 50.00 mm	
<b>Insertion Bridge</b>		
KSL6-10W	Width : 160.50 mm Pitch : 17.00 mm Length : 28.50 mm	
KSL6-2W	Width : 24.50 mm Pitch : 17.00 mm Length : 26.50 mm	
KSL6-3W	Width : 41.50 mm Pitch : 17.00 mm Length : 26.50 mm	
<b>Marker For Terminal Blocks</b>		
LABEL KN6.5	Width : 6.70 mm	
<b>Partition Plate</b>		
KBXF	Height : 53.40 mm Thickness : 1.50 mm Length : 54.00 mm	
<b>Marker carriers</b>		
SCUDDMLH	Height : 71.50 mm Width : 10.00 mm Length : 55.60 mm	

Marker carriers		
SCUNMLH	Height : 53.50 mm Width : 9.50 mm Length : 50.60 mm	
DCKNMLH	Height : 45.50 mm Width : 6.00 mm Length : 43.50 mm	
SCKNMLH	Height : 45.50 mm Width : 8.00 mm Length : 44.90 mm	

