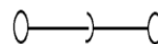
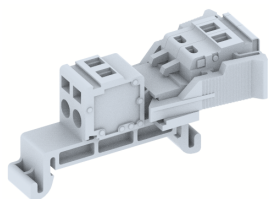


DPSC5.08WF-2W

Terminal Type - DPSC5.08WF - 2W , Plug & socket type terminal block , nominal voltage: 250 V, nominal current: 16 A, connection method: Spring cage connection , number of connections: 4, cross section: 0.2 mm² - 2.5 mm², Rated cross-section - 2.5 mm² , mounting type: TS35/7.5 , TS35/15



Approvals

CE

General Information

Product Name	DPSC5.08WF-2W
Connection Method	Spring Cage Connection
Rating	250 V/16 A/2.5 mm ² / Nm
HSN Number	85389000
Standard Packing Qty(in No)	50
Country Of Origin	India
Screw thread	NAV

Dimensions & Weight

Width	26.05 mm	1.03 inch
Length	58.51 mm	2.3 inch
Height	26.15 mm	1.03 inch
Weight of std. Packing Unit	0.5 Kg	

Material Data

Insulating Material	Polyamide 6,6
Standard Colour	Gray
Colour Variants	Red , Yellow , Blue , Black , Green , Khakhi ,

Rated Conductor Size



Conductor cross section flexible min	0.2 mm ²
Conductor cross section flexible max	2.5 mm ²
Conductor cross section solid min	0.2 mm ²
Conductor cross section solid max	2.5 mm ²

Ratings - IEC

Connection in acc. with standard	IEC 60947-7-1
Nominal Voltage U_n	250 V
Nominal Current I_n	16 A
Nominal cross section	2.5 mm ²
Short-time current	0.18 kA
Rated surge voltage	4 kV
Degree of pollution	3

Product Accessories

DIN Rail Perforated

CHKDS	Height : 15.00 mm Width : 35.00 mm Thickness : 1.50 mm	
CHKS	Height : 7.50 mm Width : 35.00 mm Thickness : 1.00 mm	

DIN Rail, Unperforated

CHKD	Height : 15.00 mm Width : 35.00 mm Thickness : 1.50 mm	
CHK	Height : 7.50 mm Width : 35.00 mm Thickness : 1.00 mm	

End Cap

CHKENDCAP	Height : 14.00 mm Width : 9.00 mm Length : 41.50 mm	
-----------	---	---

Marker For Terminal Blocks

LABEL KN5.08	Pitch : 5.08 mm	
--------------	-----------------	---

Tool

DPSCCOT	Height : 6.90 mm Width : 5.00 mm Length : 20.30 mm	
---------	--	---