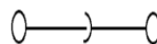
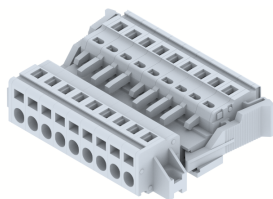


## DPSC5.08PM-9W

Terminal Type - DPSC5.08PM - 9W , Plug & socket type terminal block , nominal voltage: 250 V, nominal current: 16 A, connection method: Spring cage connection , number of connections: 18, cross section: 0.2 mm<sup>2</sup> - 2.5 mm<sup>2</sup>, Rated Cross section - 2.5 mm<sup>2</sup> , AWG : 24-12 , mounting type: Panel mounting / Surface mounting



### Approvals



### General Information

Product Name	DPSC5.08PM-9W
Connection Method	Spring Cage Connection
Rating	250 V/16 A/2.5 mm <sup>2</sup> / Nm
HSN Number	85389000
Standard Packing Qty(in No)	50
Country Of Origin	India
Screw thread	NAV

### Dimensions & Weight

Width	61.61 mm	2.43 inch
Length	45.25 mm	1.78 inch
Height	14.45 mm	0.57 inch
Weight of std. Packing Unit	1.8 Kg	

### Material Data

Insulating Material	Polyamide 6,6
Standard Colour	Gray
Colour Variants	Red , Yellow , Blue , Black , Green , Khakhi ,

### Rated Conductor Size

Conductor cross section flexible min	0.2 mm <sup>2</sup>
Conductor cross section flexible max	2.5 mm <sup>2</sup>
Conductor cross section solid min	0.2 mm <sup>2</sup>
Conductor cross section solid max	2.5 mm <sup>2</sup>

### Ratings - IEC

Connection in acc. with standard	IEC 60947-7-1
Nominal Voltage $U_n$	250 V
Nominal Current $I_n$	16 A
Nominal cross section	2.5 mm <sup>2</sup>
Short-time current	0.18 kA
Rated surge voltage	4 kV
Degree of pollution	3

### Ratings - ATEX

ATEX Standard	
ATEX Nominal Voltage $U_n$	V
ATEX Nominal Current $I_n$	A
ATEX Cross Sec. Flexible Max.	mm <sup>2</sup>

### Ratings - CSA

CSA Standard	
B - CSA Nominal Voltage $U_N$	V
B - CSA Nominal Current $I_N$	A
B - CSA Wire Min	AWG
B - CSA Wire Max	AWG

### Ratings - UL

UL Standard	UL 1059
B - UL Nominal Voltage $U_N$	300 V
B - UL Nominal Current $I_N$	16 A
B - UL Wire Min	24 AWG
B - UL Wire Max	12 AWG

### Product Accessories

#### Marker For Terminal Blocks

LABEL KN5.08	Pitch : 5.08 mm	
--------------	-----------------	---

#### Tool

DPSCCOT	Height : 6.90 mm Width : 5.00 mm Length : 20.30 mm	
---------	--	---