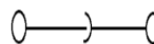
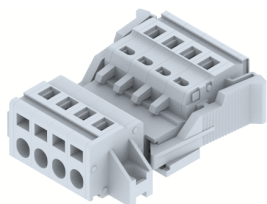


DPSC5.08PM-4W

Terminal Type - DPSC5.08PM - 4W , Plug & socket type terminal block , nominal voltage: 250 V, nominal current: 16 A, connection method: Spring cage connection , number of connections: 8, cross section: 0.2 mm² - 2.5 mm² , Rated cross section - 2.5 mm², mounting type: Panel mounting / Surface mounting



Approvals



General Information

Product Name	DPSC5.08PM-4W
Connection Method	Spring Cage Connection
Rating	250 V/16 A/2.5 mm ² / Nm
HSN Number	85389000
Standard Packing Qty(in No)	50
Country Of Origin	India
Screw thread	NAV

Dimensions & Weight

Width	36.24 mm	1.43 inch
Length	45.25 mm	1.78 inch
Height	14.45 mm	0.57 inch
Weight of std. Packing Unit	0.54 Kg	

Material Data

Insulating Material	Polyamide 6,6
Standard Colour	Gray
Colour Variants	Red , Yellow , Blue , Black , Green , Khakhi ,

Rated Conductor Size

Conductor cross section flexible min	0.2 mm ²
Conductor cross section flexible max	2.5 mm ²
Conductor cross section solid min	0.2 mm ²
Conductor cross section solid max	2.5 mm ²

Ratings - IEC

Connection in acc. with standard	IEC 60947-7-1
Nominal Voltage U_n	250 V
Nominal Current I_n	16 A
Nominal cross section	2.5 mm ²
Short-time current	0.18 kA
Rated surge voltage	4 kV
Degree of pollution	3

Ratings - ATEX

ATEX Standard	
ATEX Nominal Voltage U_n	V
ATEX Nominal Current I_n	A
ATEX Cross Sec. Flexible Max.	mm ²

Ratings - CSA

CSA Standard	
B - CSA Nominal Voltage U_N	V
B - CSA Nominal Current I_N	A
B - CSA Wire Min	AWG
B - CSA Wire Max	AWG

Ratings - UL

UL Standard	UL 1059
B - UL Nominal Voltage U_N	300 V
B - UL Nominal Current I_N	16 A
B - UL Wire Min	24 AWG
B - UL Wire Max	12 AWG