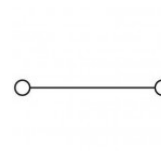
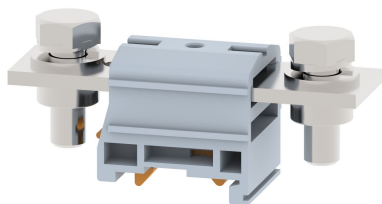


## DPBB120CN

Terminal Type - DPBB120CN , High Current connectors , nominal voltage: 1000 V, nominal current: 269 A, connection method: Bolt connection with clinch nut, number of connections: 2, cross section: 25 mm<sup>2</sup> - 120 mm<sup>2</sup> , AWG: 4 - 3/0, width: 37 mm , length: 100 mm , height : 44 mm , mounting type: TS 35/7.5, TS 35/15 , TS 32



### Approvals

CE

### General Information

Product Name	DPBB120CN
Connection Method	Bolt Connection
Rating	1000 V/269 A/120 mm <sup>2</sup> /6 Nm
HSN Number	85389000
Standard Packing Qty(in No)	10
Country Of Origin	India
Screw thread	M8

### Dimensions & Weight

Width	37 mm	1.46 inch
Length	100 mm	3.94 inch
Height	44 mm	1.73 inch
Weight of std. Packing Unit	1.59 Kg	

### Material Data

Insulating Material	Polyamide 6,6
Standard Colour	Gray
Colour Variants	Red , Yellow , Blue , Black , Green , Khakhi ,

### Rated Conductor Size

Conductor cross section flexible min	25 mm <sup>2</sup>
Conductor cross section flexible max	120 mm <sup>2</sup>
Conductor cross section solid min	25 mm <sup>2</sup>
Conductor cross section solid max	120 mm <sup>2</sup>

## Ratings - IEC

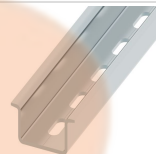
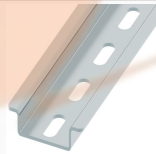
Connection in acc. with standard	IEC 60947-7-1
Nominal Voltage $U_n$	1000 V
Nominal Current $I_n$	269 A
Nominal cross section	120 mm <sup>2</sup>
Short-time current	14.40 kA
Rated surge voltage	12 kV
Degree of pollution	3

## Product Accessories



### Cover Profile

PCP120	Width : 41.00 mm Thickness : 1.50 mm Length : 126.00 mm	
--------	---	---

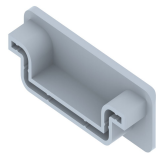
### DIN Rail Perforated

CHKDS	Height : 15.00 mm Width : 35.00 mm Thickness : 1.50 mm	
CHKS	Height : 7.50 mm Width : 35.00 mm Thickness : 1.00 mm	

### DIN Rail, Unperforated

CHKD	Height : 15.00 mm Width : 35.00 mm Thickness : 1.50 mm	
CHK	Height : 7.50 mm Width : 35.00 mm Thickness : 1.00 mm	

### End Cap

CHKENDCAP	Height : 14.00 mm Width : 9.00 mm Length : 41.50 mm	
-----------	---	---

### End Clamp

SCUP	Height : 34.00 mm Length : 44.75 mm	
------	--	---

<b>End Clamp</b>		
SCUDD	Height : 50.00 mm Width : 10.00 mm Length : 55.60 mm	
SCUSL	Height : 41.10 mm Width : 8.00 mm Length : 47.50 mm	
<b>Marker For Terminal Blocks</b>		
LABEL KN10	Width : 10.00 mm	
<b>Partition Plate</b>		
BPN 120	Height : 102.50 mm Width : 3.00 mm Length : 125.00 mm	
<b>Marker carriers</b>		
SCUDDMLH	Height : 71.50 mm Width : 10.00 mm Length : 55.60 mm	