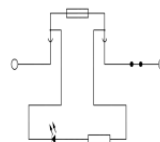
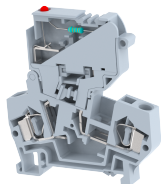


DCF4D4

Terminal Type - DCF4D4 , Fuse terminal block with LED of 110 VDC for fuse failure indication , nominal voltage: 110 V, nominal current: 10 A , suitable size of cartridge fuse : 5X20 mm and 5x25 mm, connection method: Spring Cage connection , number of connections: 2, cross section: 0.5 mm² - 4 mm², AWG: 20 - 10 , width: 8 mm , length: 60 mm , height : 64.8 mm , mounting type: TS 35/7.5, TS 35/15



Approvals

CE

General Information

| | |
|-----------------------------|-----------------------------------|
| Product Name | DCF4D4 |
| Connection Method | Spring Cage Connection |
| Rating | 110 V/10 A/4 mm ² / Nm |
| HSN Number | 85389000 |
| Standard Packing Qty(in No) | 50 |
| Country Of Origin | India |
| Screw thread | NAP |

Dimensions & Weight

| | | |
|-----------------------------|---------|-----------|
| Width | 8 mm | 0.31 inch |
| Length | 60 mm | 2.36 inch |
| Height | 64.8 mm | 2.55 inch |
| Weight of std. Packing Unit | 1 Kg | |

Material Data

| | |
|---------------------|--|
| Insulating Material | Polyamide 6,6 |
| Standard Colour | Gray |
| Colour Variants | Red , Yellow , Blue , Black , Green , Khakhi , |

Rated Conductor Size



| | |
|--------------------------------------|---------------------|
| Conductor cross section flexible min | 0.5 mm ² |
| Conductor cross section flexible max | 4 mm ² |
| Conductor cross section solid min | 0.5 mm ² |
| Conductor cross section solid max | 4 mm ² |

Ratings - IEC

| | |
|----------------------------------|-------------------|
| Connection in acc. with standard | IEC 60947-7-3 |
| Nominal Voltage U_n | 110 V |
| Nominal Current I_n | 10 A |
| Nominal cross section | 4 mm ² |
| Short-time current | NAP kA |
| Rated surge voltage | 8 kV |
| Degree of pollution | 3 |

Product Accessories

DIN Rail Perforated

| | | |
|-------|--|--|
| CHKDS | Height : 15.00 mm Width : 35.00 mm Thickness : 1.50 mm |  |
| CHKS | Height : 7.50 mm Width : 35.00 mm Thickness : 1.00 mm |  |

DIN Rail, Unperforated

| | | |
|------|--|---|
| CHKD | Height : 15.00 mm Width : 35.00 mm Thickness : 1.50 mm |  |
| CHK | Height : 7.50 mm Width : 35.00 mm Thickness : 1.00 mm |  |

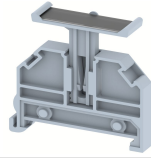

End Cap

| | | |
|-----------|---|---|
| CHKENDCAP | Height : 14.00 mm Width : 9.00 mm Length : 41.50 mm |  |
|-----------|---|---|

End Clamp

| | | |
|-------|---|---|
| SCUP | Height : 34.00 mm Length : 44.75 mm |  |
| SCUSL | Height : 41.10 mm Width : 8.00 mm Length : 47.50 mm |  |

| End Clamp | | |
|-----------------------------------|--|---|
| SCUDD | Height : 50.00 mm Width : 10.00 mm Length : 55.60 mm |  |
| DCKN | Height : 33.00 mm Width : 6.00 mm Length : 43.50 mm |  |
| DCKN10 | Height : 35.00 mm Width : 10.00 mm Length : 43.50 mm |  |
| SCKN | Height : 34.50 mm Width : 8.00 mm Length : 44.90 mm |  |
| SCUN | Height : 35.50 mm Width : 9.50 mm Length : 50.60 mm |  |
| End Cover | | |
| DFEP | Height : 56.50 mm Width : 2.50 mm Length : 66.00 mm |  |
| Marker For Terminal Blocks | | |
| LABEL KN8 | Width : 8.00 mm |  |
| Plug-in Bridge/Jumper | | |
| SSL4 | Height : 23.80 mm Width : 6.00 mm Length : 7.50 mm |  |
| Marker carriers | | |
| SCUDDMLH | Height : 71.50 mm Width : 10.00 mm Length : 55.60 mm |  |
| SCUNMLH | Height : 53.50 mm Width : 9.50 mm Length : 50.60 mm |  |

| Marker carriers | | |
|------------------------|---|---|
| DCKNMLH | Height : 45.50 mm Width : 6.00 mm Length : 43.50 mm |  |
| SCKNMLH | Height : 45.50 mm Width : 8.00 mm Length : 44.90 mm |  |

