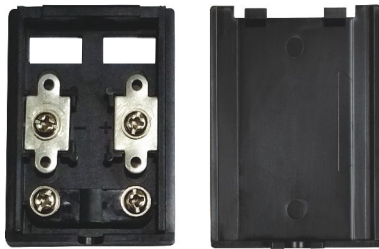


## 'elmex' JUNCTION BOX FOR STREET LIGHT APPLICATION

'elmex' has developed junction box suitable for Solar street light low wattage (less than 50W) panel. 'elmex' junction boxes EPVJB3 and EPVJB6 are designed with sliding snap fit locking arrangement. 'elmex' EPVJB3 and EPVJB6 are available with 2 - in and 1- out cable connection.



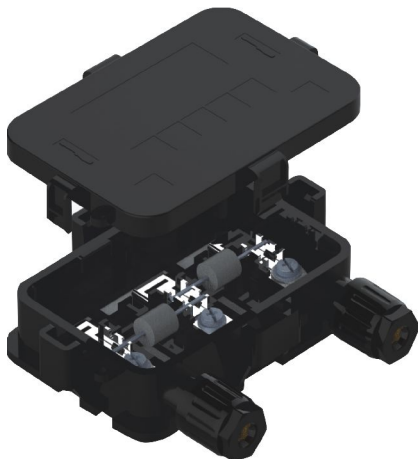
EPVJB3



EPVJB6

Description	'elmex' Specification EPVJB3	'elmex' Specification EPVJB6
Rated Current	3 A	6 A
Contact Material	Brass With Tin And Nickel Plating	Brass With Tin And Nickel Plating
Temperature	-40°C to +85°C	-40°C to +85°C
Safety Class	II	II
Application	3 W TO 20 W	30 W TO 50 W
Locking System	Sliding Snap Fit	Sliding Snap Fit

## 'elmex' 3 - RAIL JUNCTION BOX



3 - RAIL JUNCTION BOX

Description	'elmex' 3 - RAIL JUNCTION BOX
Rated Voltage	1000V DC
Rated Current	10 A
Contact Material	Copper With Nickel Plating
Temperature	-40°C to +85°C
Application	50 W To 150W
Locking System	Snap In